

TRUSTKEEPER® PCI MANAGER THIRD PARTY UPLOAD WALK-THROUGH

For new accounts, click "Get Started" on the splash page.

Welcome to the Aquiline Bank PCI Program United States

Aquiline Bank | Powered by Trustwave®

Getting Started with TrustKeeper® is easy.
Register your business today.

Get Started

Already Registered? [Login](#)

Welcome to the Aquiline Bank PCI program. This program is designed to help you understand and respond to the data security needs of your business - especially if you accept credit cards for payment.
To get started, you simply need to register. The PCI wizard will walk you through the self-assessment process.

[What is PCI DSS?](#) [Become PCI Compliant](#) [About Trustwave](#) [Support](#)

Enter required merchant information.

Trustwave® English (UK)

TrustKeeper Registration

Start My Business Register

Company Information

Company Name: * ?

Merchant ID: * ?

Country: * ?

ZIP/Postal Code: * ?

* Required field

Authorized Contact

Primary contact: * This is for the actual PCI certification user, who will be the primary person contacting Trustwave support. ?

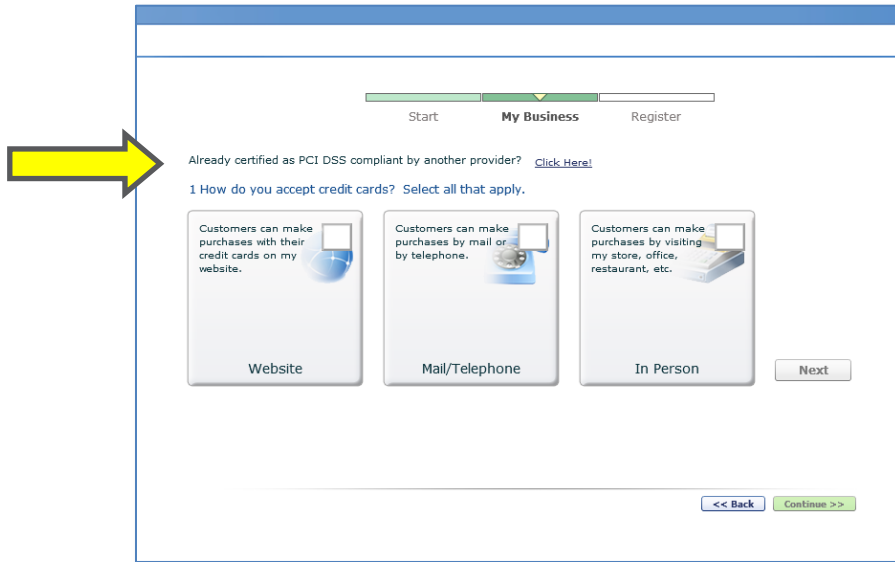
First Name: *

Last Name: *

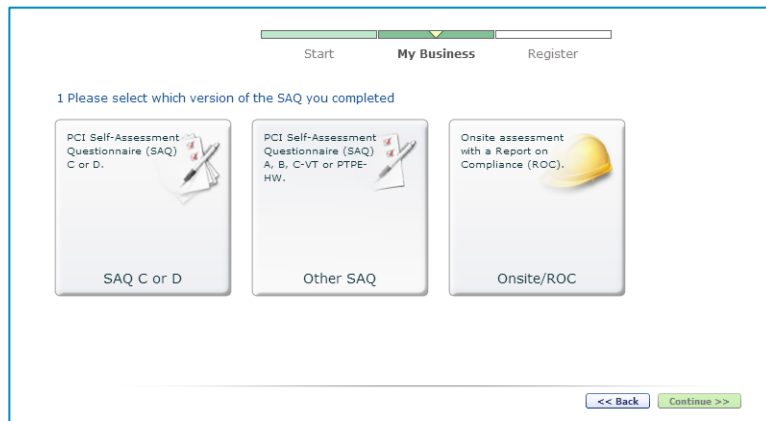
Email: *

Phone Number: *

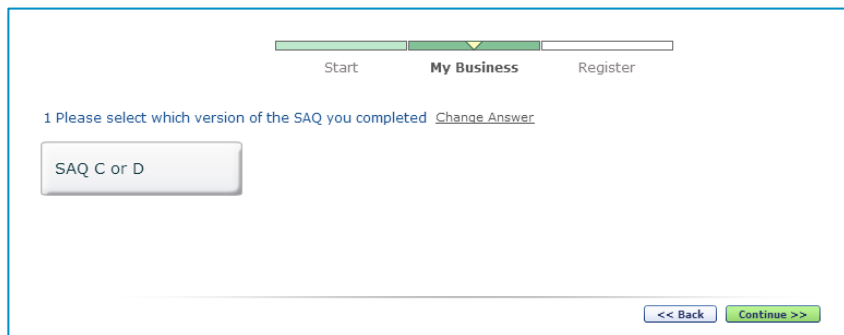
To register as directly certified by another provider, click the link above the multiple choice boxes.



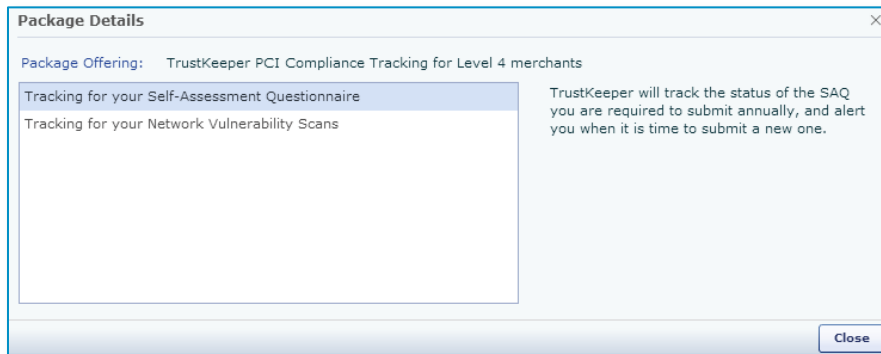
Select the version of the Self-Assessment Questionnaire (SAQ) or Report on Compliance (ROC) completed.



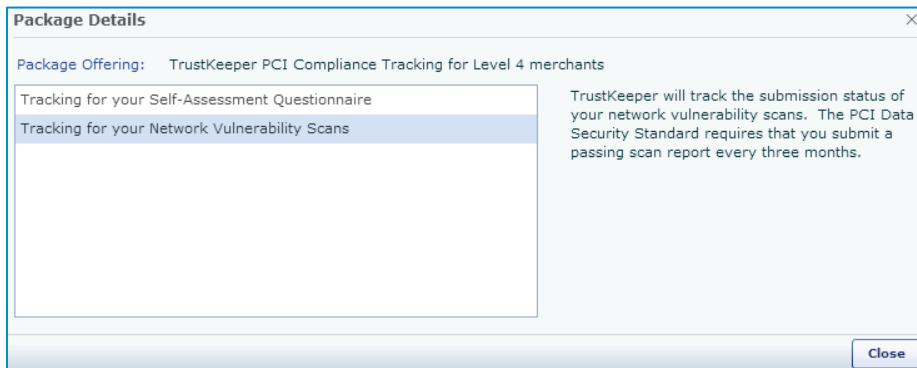
When you select the completed SAQ, you will be asked to select a version. Currently, there is only one version available, so proceed by clicking "Continue".



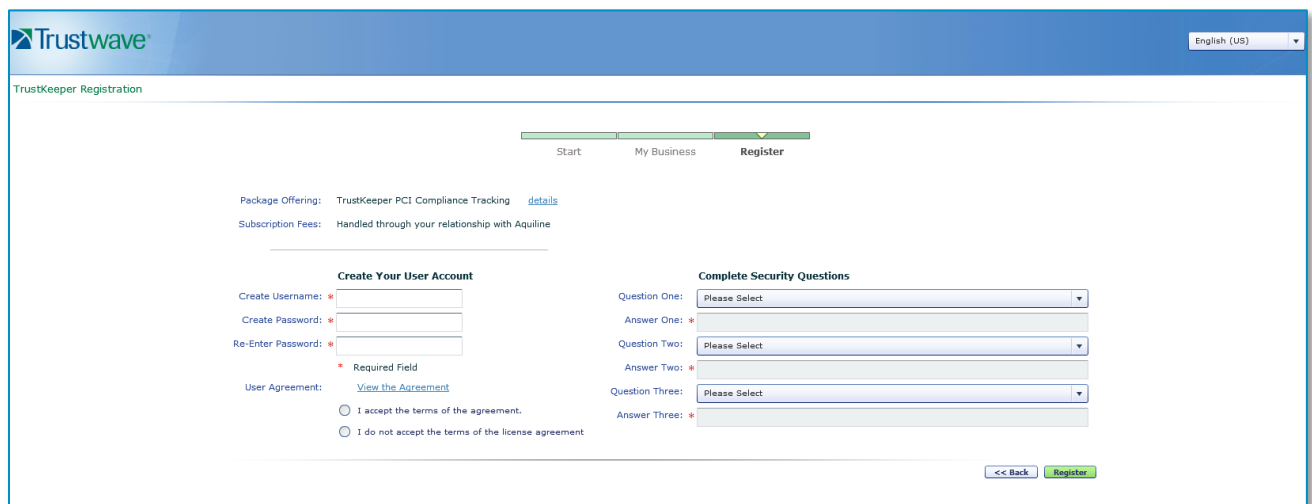
Below is the Package Offering for non-scanning merchants:



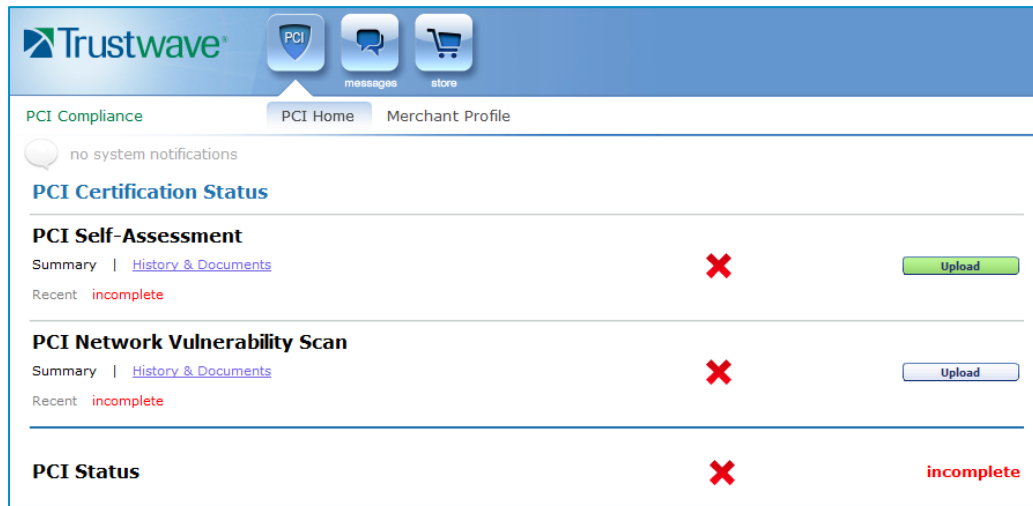
Below is the Package Offering for scanning merchants:



Continue with registration.



Below is the dashboard for a SAQ and scanning merchant. Click "Upload" to provide your compliance documents. (SAQ Only merchants will only see the SAQ upload.)



Enter information for your SAQ. All fields are required.

The 'Upload a PCI Assessment' dialog box contains the following fields and options:

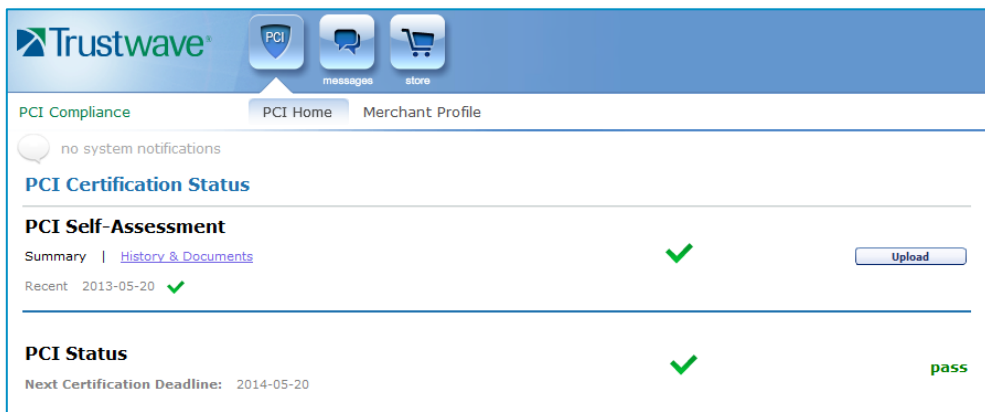
- Assessment Method: SAQ D
- Document Type: Complete SAQ
- Assessor: Self
- Date completed: 05/20/2013
- Date received: 2013-05-20
- SAQ status: Compliant
- File to Upload: Test sheet.docx
- Checkbox: The information provided in the attached document is a true reflection of our business environment.

Enter information for your scan. All fields are required.

The 'Upload a PCI Vulnerability Scan' dialog box contains the following fields and options:

- Document type: Executive Summary
- Assessor: Trustwave
- Date completed: 05/20/2013
- Date received: 2013-05-20
- Scan status: Compliant
- File to Upload: Test sheet.docx
- Checkbox: The information provided in the attached document is a true reflection of our business environment.

A compliant dashboard of a SAQ only merchant will display a green checkmark next to the PCI Self-Assessment and the PCI Status.



A compliant dashboard of a SAQ and scanning merchant will display a green checkmark next to the PCI Self-Assessment, PCI Network Vulnerability Scan and the PCI Status.

